

# The Term Ahead



## Year 10

Curriculum overview and upcoming events



Tenacity | Empathy | Aspiration | Motivation

# Message from Mrs Metters



“ Well done Year 10 on an utterly brilliant start to GCSEs! Your new teachers have been consistently blown away by how great their new Year 10 classes are, what a delight you are to teach, and how engaged you are with your new learning. All the new challenges of stepping up to Key Stage 4 learning, tackling homework, and all the self-management that comes with it, and of working towards genuine real-life exam standards have been gobbled up by Year 10 students, who show that they are hungry for learning and striving to be the very best that they can be. It has been a genuine pleasure to visit lesson after lesson, when colleagues jump at the opportunity to compliment and praise their students. This does not happen by accident and is a direct result of Year 10 students', and their families', positivity and keen conscientious approach to their learning.

It is also a pleasure to see how immaculate Year 10 students look as they move around our school: pride in our uniform underpins pride in our learning and Year 10 are showing this in spades!

With a view to helping parents help their children, we have written home to highlight our new reading protocols and the value of the Class Charts platform. With access to Class Charts all parents can see exactly what homework's their child is being set, how long has been allocated to do them and when they are due in. Parents can also see in real time if their child is issued with a TEAM point, which is fabulous if it's a green one, and really important for conversations at home if it should be a red one.

Parents can also check their child's attendance via Class Charts. Every day of learning counts, now that we are at GCSE. It is imperative that students attend as much of school as possible. National guidance is that "good" attendance is anything over 95%. If you have any concerns about your child's attendance please get in touch with your child's tutor, who will be more than happy to explore ways in which school can support you as a family. There is a direct correlation, at GCSE, between attendance at school across the 2-year courses and attainment at exam.

Well done, Year 10, and please enjoy a really well-earned rest over half term. I am terribly proud of you all and can't wait to get back to our exciting learning journey together! You really are the best bunch in the school 😊

# What are we learning in Autumn 2?

English	Macbeth; Unseen Poetry
Maths	Probability; Equations and inequalities
Science	Nuclear radiation; decay equations; density and states of matter; specific and latent heat; disease; immune system and vaccinations
Biology / Chemistry / Physics	Ionic bonding; metallic and covalent bonding; polymers and nano; infection and response; disease; vaccination; electricity; circuits; the national grid
History	Medicine through time: 1700- WW1 and the trenches
Geography	Urban Issues and Challenges: Mumbai; urbanisation in the UK; Plymouth case study; sustainable urban development
French	Technology and social media: vocab related to phones, apps, activities and tech; devoirs; present tense and adverbs of frequency;
German	Technology and social media: vocab related to phones, apps, activities and tech; present tense and frequency; past tense
Computer Science	Algorithms; networks
Art	Developing ideas: material; art history.
Drama	Introduction to GCSE Drama; Blood Brothers
Music	Pop conventions: Rock and Roll; Pop ballads; Solo artists
D.T.	Generating design; planning for manufacture; CAD/CAM; Completion of manufacture
R.S.	Nature of God; creation; word; incarnation; resurrection; law; sin; sacrifice; Afterlife
Sport Studies	Leadership; Practices to Improve
P.D.	CV writing; anti social behaviour
Animal Care	Responding to feedback. Preparation for handling
Hosp & Catering	Front and back of house; work flow; Equipment and materials; customer provision; VAT/Cost/ economy; environmental issues
Health & Social	Communication; Safeguarding; Infection prevention; safety procedures and measures
Media Studies	Representation and power; gender stereotypes; masculinity and historical representations of gender; representations of race and ethnicity; representation of issues; places; events
Business / Enterprise	Business: Business plans; cash flow; revenue; cost; profit Enterprise: Product design and review; cost; revenue; pricing; risk;

# Upcoming events



**Sleep over in school!**

Take part in The Big Sleep!  
Sleep outdoors in the Quad.  
In the Sports Hall if it's raining – but it will be cold!

**FRIDAY 17<sup>th</sup> NOVEMBER – 6pm**  
**Until SATURDAY 18<sup>th</sup> NOVEMBER – 9am**

We have partnered with St Petrocs who are the leading charity in Cornwall to tackle homelessness.

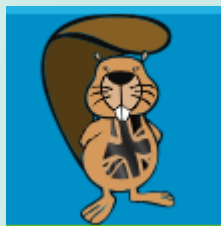
Demonstrate your empathy and help those in need.

Raise £20 to take part – the money will then go to the Charity.

See Mr Oakes to collect a letter for further details.



Tenacity | Empathy | Aspiration | Motivation



**UK Bebras**

All students studying Computer Science from Year 7 – Year 11 will take part in the Bebras computational thinking national challenge at the start of November in their lessons. The students will have 40 minutes to solve a variety of problems in order to gain as many points as they can. Those who qualify will then go on to compete in the next round. All details and practise tasks can be accessed at <https://www.bebbras.uk/>



The science department is running the CREST awards. These are recognised achievements in the STEM (Science, Technology, Engineering and Maths) field, and we would love to see the students' tenacity and aspiration; using knowledge, creativity and teamwork to overcome 'real-life' obstacles, trial new ideas and evaluate how well they did (or did not!) work. This opportunity will run at Break 2 and will be in Room 18. If your child would like to be involved, or would like anymore information please contact Mr.Flaherty ([nflaherty@saltashcloud.net](mailto:nflaherty@saltashcloud.net))



Tenacity | Empathy | Aspiration | Motivation

# Upcoming events



## Geography fieldwork

Year 11- fieldwork trip to Millbay, Plymouth

Year 9- on site, water landscapes of the river Tamar

Year 8- on site, renewable energy

Year 7- on site, plastic pollution survey



## Inter- house cross country

This will take place in P.E. lessons after half term.  
Give it your all- it's a great event!



## Year 7 University Passport

Watch this space for the launch of the Children's University Passport scheme!

## Introducing our new Houses...



# UPCOMING EVENTS: TEAM Library

## LIBRARY AND READING CELEBRATION WEEK: OCTOBER 30<sup>TH</sup> – NOVEMBER 3<sup>RD</sup>

### Monday: Saltash Story Selfies

Come and have your photo taken in our photo booth with your favourite book.

Sign up your quiz team and join our book club.



### Tuesday: Halloween Horrors!

Join Mr Ward as he reads and discusses some Spooktacular literature.

### Wednesday: Special Guest

David Orton, from Saltash Community Library, comes up to talk about everything on offer at our local library.



### Thursday: Monthly Reading Quiz

This month's quizmaster, Mrs Oates, will be quizzing teams on Roald Dahl's short story 'The Sound Machine'. You've got to read it to win it!

### Friday: Literary Scavenger Hunt

Become TEAM Saltash's own Sherlock Holmes, as you discover new literature whilst hunting down the answer to the clues.



# LIBRARY READING QUIZZES

Every month, the library quiz will focus on a piece of reading set by that month's quizmaster!

This month, all the questions will be on Roald Dahl's short story 'The Sound Machine'.

This month's quizmaster is Mrs Oates!

Sign up your team (max 4) in the library before spaces run out!



# FANTASTIC BOOKS AND WHERE TO FIND THEM BOOK CLUB

Monday lunch week B.

Led by Mrs Wise.

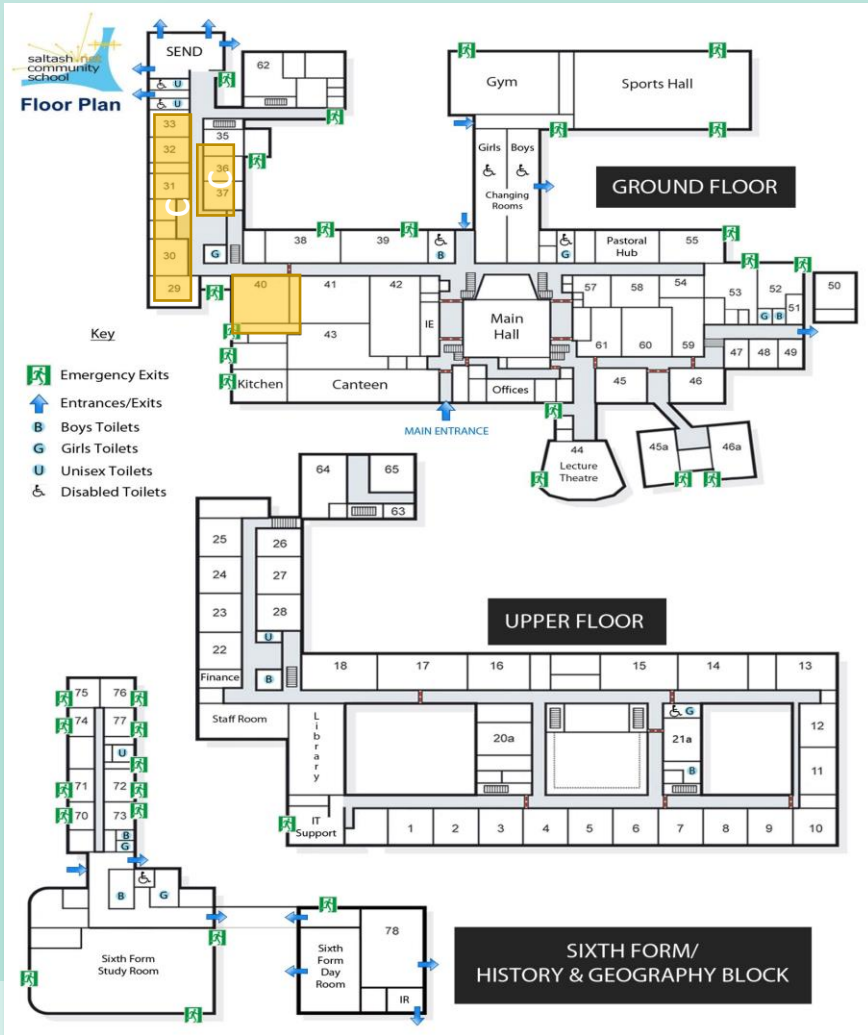
Read, discuss and debate a range of exciting reading texts.

Sign up in the library on Monday 30<sup>th</sup> October.





# Year 10 tutors



Please feel free to contact your child's tutor at any time by phone or email if you have any queries, whether this be pastoral, academic or a general enquiry.

8:35am	Line up
8:40-9:00	Tutor time
9:00-10:00	Period 1
10:00-11:00	Period 2
11:00-11:20	Break 1
11:20-12:20	Period 3
12:20-13:20	Period 4
13:20-14:00	Break 2
14:00-15:00	Period 5

Tutor group	Tutor	Room
10AMR	Mr Adrian Rushton <a href="mailto:arushton@saltashcloud.net">arushton@saltashcloud.net</a>	37
10KEJ (EDV)	Ms Kayleigh Jones <a href="mailto:kjones@saltashcloud.net">kjones@saltashcloud.net</a>	36
10GEJ	Mr Gareth Jones <a href="mailto:gjones@saltashcloud.net">gjones@saltashcloud.net</a>	33
10REB	Mrs Rachael Broad <a href="mailto:rbroad@saltashcloud.net">rbroad@saltashcloud.net</a>	32
10FAS	Ms Louise Johns /Mr Roland Wills <a href="mailto:ljohns@saltashcloud.net">ljohns@saltashcloud.net</a>	31
10MDT (FSL)	Mr Matthew Turner <a href="mailto:mturner@saltashcloud.net">mturner@saltashcloud.net</a>	30
10JBW	Mr Jacob Whitnell <a href="mailto:jwhitnell@saltashcloud.net">jwhitnell@saltashcloud.net</a>	29
10LAS	Ms Lucy Sayer <a href="mailto:lsayer@saltashcloud.net">lsayer@saltashcloud.net</a>	40

Head of Year: Mrs E Metters [emetters@saltashcloud.net](mailto:emetters@saltashcloud.net)

# Uniform

There are no major changes to our uniform policy from previous years, but as we strive for excellence and equity, we will enforce our policy with 'no excuses' to ensure that we hold every student to the same high standard. Tutors will check uniform at line up each morning. Please support us in setting the tone by ensuring your child comes to school in the correct attire.



Saltash School blazer



Blue shirt or blouse



Black V-necked jumper with sky blue stripe



Saltash School tie



Black tailored trousers or shorts (no leggings, jeans or jeggings.)



Black drop waist pleated skirt

## We do not allow:

- Piercings
- Jewellery (except one pair of studs in the ears and one watch.)
- Acrylic or painted nails
- Excessive make-up or unnatural hair colours

If children do not attend in the correct uniform, they will be issued with a letter giving 7 days to correct the uniform infringement. After those 7 days, they will be expected to wear items issued by the school on that day. If a child refuses to wear these items, this will be dealt with in line with our behaviour policy for non-compliance. Jewellery will be confiscated and held at reception for collection.



Black, flat- heeled, polishable school shoes- NO TAGS!

Saltash  
Community  
School

Achieving More Together

# PE Uniform

There are no major changes to our uniform policy from previous years, but as we strive for excellence and equity, we will enforce our policy with 'no excuses' to ensure that we hold every student to the same high standard. Tutors will check uniform at line up each morning. Please support us in setting the tone by ensuring your child comes to school in the correct attire.



NEW  
Loose fitting, black PE shorts (not lycra.)



Black and gold T-shirt with school motif



Black and gold multisport top



Black and gold training top with school motif

Students will also require:

- Black sports socks
- White socks
- Shin pad
- Gum shield
- Football boots
- Trainers (must be suitable for all weather pitches)
- Black leggings / sweatpants for outdoor P.E.

**Don't forget we run a pre-loved uniform shop where all items are free of charge.**

**We are always looking for donations, especially from younger year groups. Please contact Dani King [dking@saltashcloud.net](mailto:dking@saltashcloud.net) for information.**



Saltash  
Community  
School

Achieving More Together

# Equipment

It is important that all students arrive to school fully equipped to learn. It is advisable for students to bring a bag and refillable water bottle to school.

They must also bring the following compulsory items: 1x clear pencil case ; 2x black or blue pens ; 1x purple pen; 1x pencil; 1x ruler; 1x eraser; 1x scientific calculator.

## Compulsory items



## Desirable items



Equipment will be checked by tutors at line up in the morning. If students fail to bring the correct equipment, they will be issued with the missing items for the day. Students who continually fail to bring equipment will be issued with detentions. This is about '**making it count**'- bringing the right equipment ensures no time is wasted, and shows that students value their learning.

Saltash  
Community  
School

Achieving More Together