

# The Term Ahead



## Year 8

Curriculum overview and upcoming events



Tenacity | Empathy | Aspiration | Motivation

# Message from Mr Wieprecht



“ “ What a fantastic half term Year 8 have had! It's been an absolute pleasure and a privilege to take over the Year Group and get to know them over the last seven weeks. It's been really exciting to see them settle in to a new year so well, and share in their success, and huge amount of praise points. The uniform across the year group has been near impeccable – they look so smart, and in every lesson I have visited

students are working hard, learning, and I've had some fantastic praise about the good attitude students have to their classes. It was lovely to see so many of you at the Year 8 Welcome Evening last month, and thank you so much for your support and feedback over this half term. I've been able to speak to a huge number of the year group, but if there is anything that is ever a concern or query, please don't hesitate to contact your child's form tutor, who can then pass this on to me as well if needed. As we head in to another long term, and the nights grow darker, I'm really excited to continue to share in the success of Year 8, and look forward to speaking to many of you.

Mr Wieprecht

” ”

## “No excuses”

### Tenacity

Allowing excuses perpetuates inequality. We will hold **everyone** to the same high standard, so that everyone achieves.



## “Tough love”

### Empathy

Those who need us most are often those who 'opt out.' We will show that we care by doing what is right, not easy, and by telling the truth, rather than what people want to hear.



## “Be the best you can be”

### Aspiration

Everyone deserves to succeed and to be celebrated for their achievements. We will not accept anything less than 100% effort, 100% of the time.



## “Make it count”

### Motivation

Education is the way to transform lives. We will not waste a minute and will stand firm in our high expectations for all.



# What are we learning in Autumn 2?

English	Texts Form Other Cultures; Of Mice and Men
Maths	Coordinates and linear graphs; expanding and factorising brackets; Probability
Science	Magnetism; electromagnets; the Earth's magnetic field; energy in reactions; catalysts; bond energy; respiration
History	How did Britain grow? Industrialisation and the industrial revolution
Geography	Natural Resources in Cornwall: water insecurity; global resources; increasing cost of resources; wind turbines
French	Comment est ton / ta... Vocab related to family members, physical appearance; comparative terms; the verb être; adjectival agreement; gender
German	Weihnachten in Deutschland; food; drink; free time activities; modal verbs; opinions
Computer Science	LAN/ WAN/ Topologies; the internet; BEBRAS Challenge
Art	Surrealism: Magritte; Loli.
Drama	Fairy tales: platform theatre; intonation; mime; gesture; use of space
Music	Reggae: skank chords; syncopated riff; base lines; back beats
D.T.	Graphics: vacuum forming; packaging nets; production lines; Food: provenance fish goujons; Cornish fairings; pastry; Product: Marking out; cutting; assembly; completion of product
R.S.	Halal and Haram; Ijtihad; Life as a Young Muslim
P.E.	Outwitting Opponents; Fit for Life; Game Sense (various sports and use of gym)
P.D.	Careers and occupations; Wages and Budgeting; Money and values; Entrepreneurial skills



# Upcoming events



## Sleep over in school!

Take part in The Big Sleep!  
Sleep outdoors in the Quad.  
In the Sports Hall if it's raining – but it will be cold!

**FRIDAY 17<sup>th</sup> NOVEMBER – 6pm**  
**Until SATURDAY 18<sup>th</sup> NOVEMBER – 9am**

We have partnered with St Petrocs who are the leading charity in Cornwall to tackle homelessness.

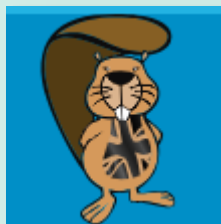
Demonstrate your empathy and help those in need.

Raise £20 to take part – the money will then go to the Charity.

See Mr Oakes to collect a letter for further details.



Tenacity | Empathy | Aspiration | Motivation



## UK Bebras

All students studying Computer Science from Year 7 – Year 11 will take part in the Bebras computational thinking national challenge at the start of November in their lessons. The students will have 40 minutes to solve a variety of problems in order to gain as many points as they can. Those who qualify will then go on to compete in the next round. All details and practise tasks can be accessed at <https://www.bebbras.uk/>



The science department is running the CREST awards. These are recognised achievements in the STEM (Science, Technology, Engineering and Maths) field, and we would love to see the students' tenacity and aspiration; using knowledge, creativity and teamwork to overcome 'real-life' obstacles, trial new ideas and evaluate how well they did (or did not!) work. This opportunity will run at Break 2 and will be in Room 18. If your child would like to be involved, or would like anymore information please contact Mr.Flaherty ([nflaherty@saltashcloud.net](mailto:nflaherty@saltashcloud.net))

Tenacity | Empathy | Aspiration | Motivation

Achieving More Together



# Upcoming events



## Geography fieldwork

Year 11- fieldwork trip to Millbay, Plymouth

Year 9- on site, water landscapes of the river Tamar

Year 8- on site, renewable energy

Year 7- on site, plastic pollution survey



## Inter- house cross country

This will take place in P.E. lessons after half term.  
Give it your all- it's a great event!



## Year 7 University Passport

Watch this space for the launch of the Children's University Passport scheme!

## Introducing our new Houses...



# UPCOMING EVENTS: TEAM Library

## LIBRARY AND READING CELEBRATION WEEK: OCTOBER 30<sup>TH</sup> – NOVEMBER 3<sup>RD</sup>

### Monday: Saltash Story Selfies

Come and have your photo taken in our photo booth with your favourite book.

Sign up your quiz team and join our book club.



### Tuesday: Halloween Horrors!

Join Mr Ward as he reads and discusses some Spooktacular literature.

### Wednesday: Special Guest

David Orton, from Saltash Community Library, comes up to talk about everything on offer at our local library.



### Thursday: Monthly Reading Quiz

This month's quizmaster, Mrs Oates, will be quizzing teams on Roald Dahl's short story 'The Sound Machine'. You've got to read it to win it!

### Friday: Literary Scavenger Hunt

Become TEAM Saltash's own Sherlock Holmes, as you discover new literature whilst hunting down the answer to the clues.



# LIBRARY READING QUIZZES

Every month, the library quiz will focus on a piece of reading set by that month's quizmaster!

This month, all the questions will be on Roald Dahl's short story 'The Sound Machine'.

This month's quizmaster is Mrs Oates!

Sign up your team (max 4) in the library before spaces run out!





# FANTASTIC BOOKS AND WHERE TO FIND THEM BOOK CLUB

Monday lunch week B.

Led by Mrs Wise.

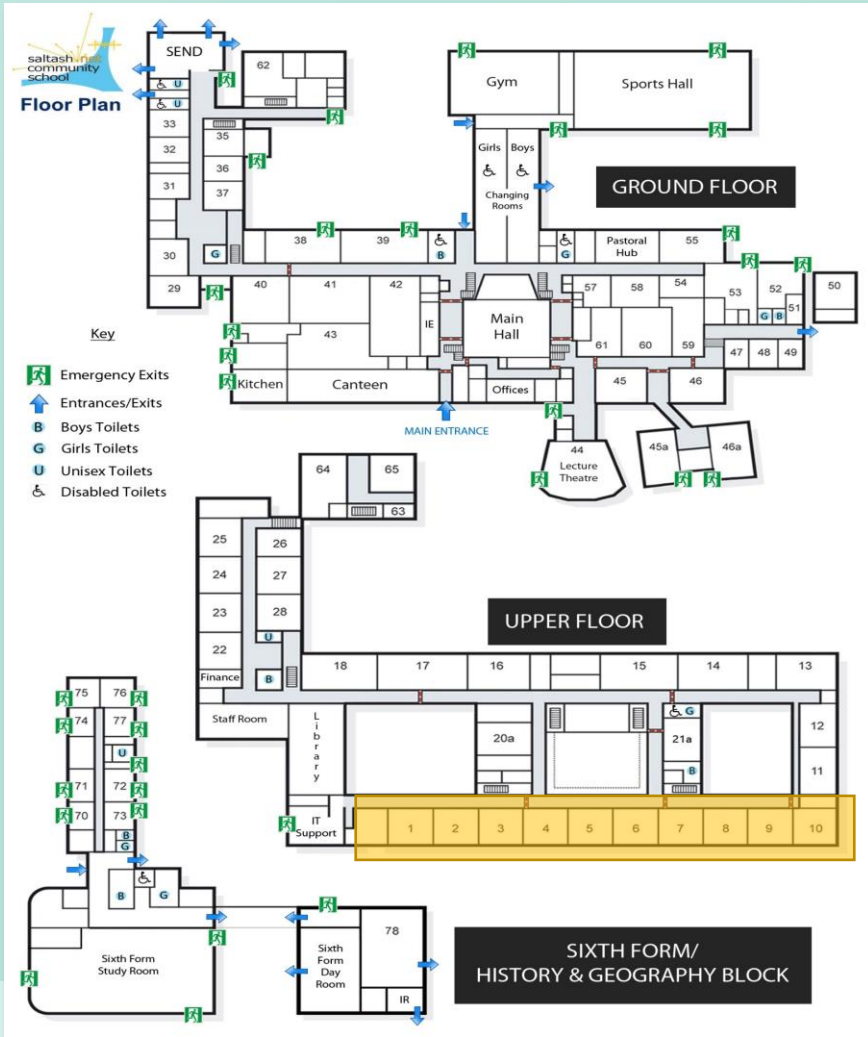
Read, discuss and debate a range of exciting reading texts.

Sign up in the library on Monday 30<sup>th</sup> October.





# Year 8 tutors



Tutors play an important role in the communication between school and home. Please feel free to contact your child's tutor at any time by phone or email if you have any queries, whether this be pastoral, academic or a general enquiry.

8:35am	Line up
8:40-9:00	Tutor time
9:00-10:00	Period 1
10:00-11:00	Period 2
11:00-11:20	Break 1
11:20-12:20	Period 3
12:20-13:20	Period 4
13:20-14:00	Break 2
14:00-15:00	Period 5

Tutor group	Tutor	Room
8AEF	Ms Alice Frances <a href="mailto:afrances@saltashcloud.net">afrances@saltashcloud.net</a>	1
8ACW	Ms Alice Crowe- Wright <a href="mailto:acrowewright@saltashcloud.net">acrowewright@saltashcloud.net</a>	3
8HHG	Ms Hannah Graham/ Mr Shaun McFadden <a href="mailto:smcfadden@saltashcloud.net">smcfadden@saltashcloud.net</a>	4
8DJT	Mr Dan Trafford <a href="mailto:dtrafford@saltashcloud.net">dtrafford@saltashcloud.net</a>	5
8JKP	Mr Jack Perry <a href="mailto:jperry@saltashcloud.net">jperry@saltashcloud.net</a>	6
8GCY	Ms Gwenn Yvinec <a href="mailto:gyvinec@saltashcloud.net">gyvinec@saltashcloud.net</a>	7
8SJE	Mr Stuart Eaglestone <a href="mailto:seaglestone@saltashcloud.net">seaglestone@saltashcloud.net</a>	8
8CEA	Ms Chloe Arcscott / Ms Anna Roden <a href="mailto:aroden@saltashcloud.net">aroden@saltashcloud.net</a>	10

Head of Year: Mr S Wieprecht

# Uniform

There are no major changes to our uniform policy from previous years, but as we strive for excellence and equity, we will enforce our policy with 'no excuses' to ensure that we hold every student to the same high standard. Tutors will check uniform at line up each morning. Please support us in setting the tone by ensuring your child comes to school in the correct attire.



Saltash School blazer



Blue shirt or blouse



Black V-necked jumper with sky blue stripe



Saltash School tie



Black tailored trousers or shorts (no leggings, jeans or jeggings.)



Black drop waist pleated skirt

## We do not allow:

- Piercings
- Jewellery (except one pair of studs in the ears and one watch.)
- Acrylic or painted nails
- Excessive make-up or unnatural hair colours

If children do not attend in the correct uniform, they will be issued with a letter giving 7 days to correct the uniform infringement. After those 7 days, they will be expected to wear items issued by the school on that day. If a child refuses to wear these items, this will be dealt with in line with our behaviour policy for non-compliance. Jewellery will be confiscated and held at reception for collection.



Black, flat- heeled, polishable school shoes- NO TAGS!

Saltash  
Community  
School

Achieving More Together

# PE Uniform

There are no major changes to our uniform policy from previous years, but as we strive for excellence and equity, we will enforce our policy with 'no excuses' to ensure that we hold every student to the same high standard. Tutors will check uniform at line up each morning. Please support us in setting the tone by ensuring your child comes to school in the correct attire.



NEW  
Loose fitting, black PE shorts (not lycra.)



Black and gold T-shirt with school motif



Black and gold multisport top



Black and gold training top with school motif

Students will also require:

- Black sports socks
- White socks
- Shin pad
- Gum shield
- Football boots
- Trainers (must be suitable for all weather pitches)
- Black leggings / sweatpants for outdoor P.E.

**Don't forget we run a pre-loved uniform shop where all items are free of charge.**

**We are always looking for donations, especially from younger year groups. Please contact Dani King [dking@saltashcloud.net](mailto:dking@saltashcloud.net) for information.**



Saltash  
Community  
School

Achieving More Together



# Equipment

It is important that all students arrive to school fully equipped to learn. It is advisable for students to bring a bag and refillable water bottle to school.

They must also bring the following compulsory items: 1x clear pencil case ; 2x black or blue pens ; 1x purple pen; 1x pencil; 1x ruler; 1x eraser; 1x scientific calculator.

## Compulsory items



## Desirable items



Equipment will be checked by tutors at line up in the morning. If students fail to bring the correct equipment, they will be issued with the missing items for the day. Students who continually fail to bring equipment will be issued with detentions. This is about '**making it count**'- bringing the right equipment ensures no time is wasted, and shows that students value their learning.