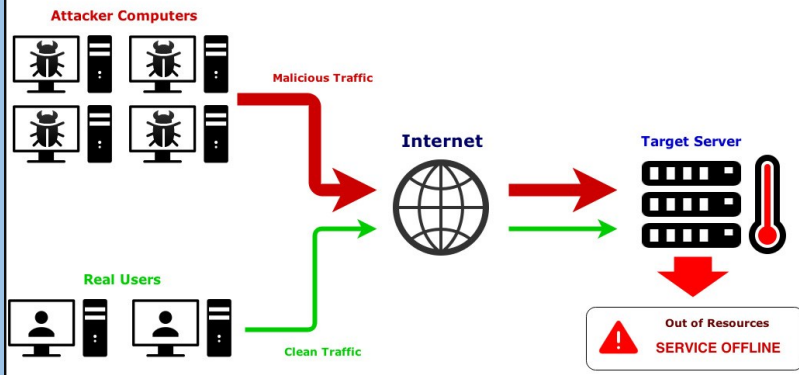


Operation of a DDoS attack

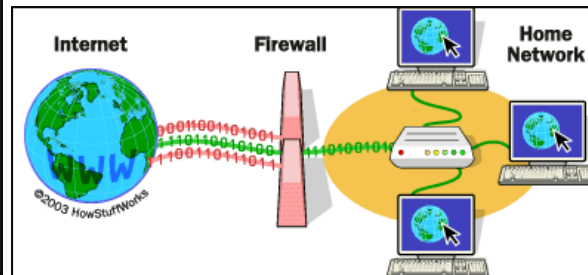
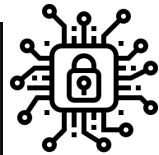


Social Engineering Explained

Also known as human hacking, social engineering is the manipulation of someone to divulge confidential information that can be used for fraudulent purposes.



How Encryption Works



RANSOMWARE



Blackmails you

SPYWARE



Steals your data

ADWARE



Spams you with ads

Types of Malware

WORMS



Spread across computers

TROJANS



Sneak malware onto your PC

BOTNETS



Turn your PC into a zombie



Cyber Security	Defending computers, servers, devices and systems from malicious attacks.
Data	data is information that has been translated into a form that is efficient for movement or processing
Information	Data that has meaning, not just a number or a letter.
Online	Using a device which is connected to a network—e.g the internet, 3G, wifi hotspot, etc.
Privacy	A users control over their personal information.
Hacking	Gaining unauthorised access to data in a computer.
Data Protection Act	Legislation passed by parliament that governs the protection of personal data in the UK.
Computer Mis-use Act	Defines and criminalises a number of offences involving the use of a computer, e.g. unauthorised access to computer systems.
DoS/ DDoS Denial of Service / Distributed Denial of Service	An attack designed to render online services inaccessible. One type of this attack involves many computers simultaneously flooding a target with network traffic.
Brute Force Attack	Repeatedly entering a password/ pin code to gain access
Malware	Software designed to cause harm or damage to a computer. This includes viruses, adware, spyware, etc.
Network	A group of interconnected computers/devices.
Policy	provide <i>rules</i> and guidelines on what network users can and cannot do.
Social Engineering	the act of exploiting human weaknesses to gain access to personal information and protected systems. Social engineering relies on manipulating individuals - such as blagging, phishing and shoulder surfing
Penetration testing	Systems are tested for vulnerabilities to reveal any weaknesses in the system which can be fixed.
Firewall	An application that prevents unauthorised connections to and from the Internet.
User authentication	Checking the user is who they are—log on details, CAPTCHA and biometrics
Encryption	Files that are encrypted have been altered using a secret code and are unreadable to unauthorised parties.

Impacts